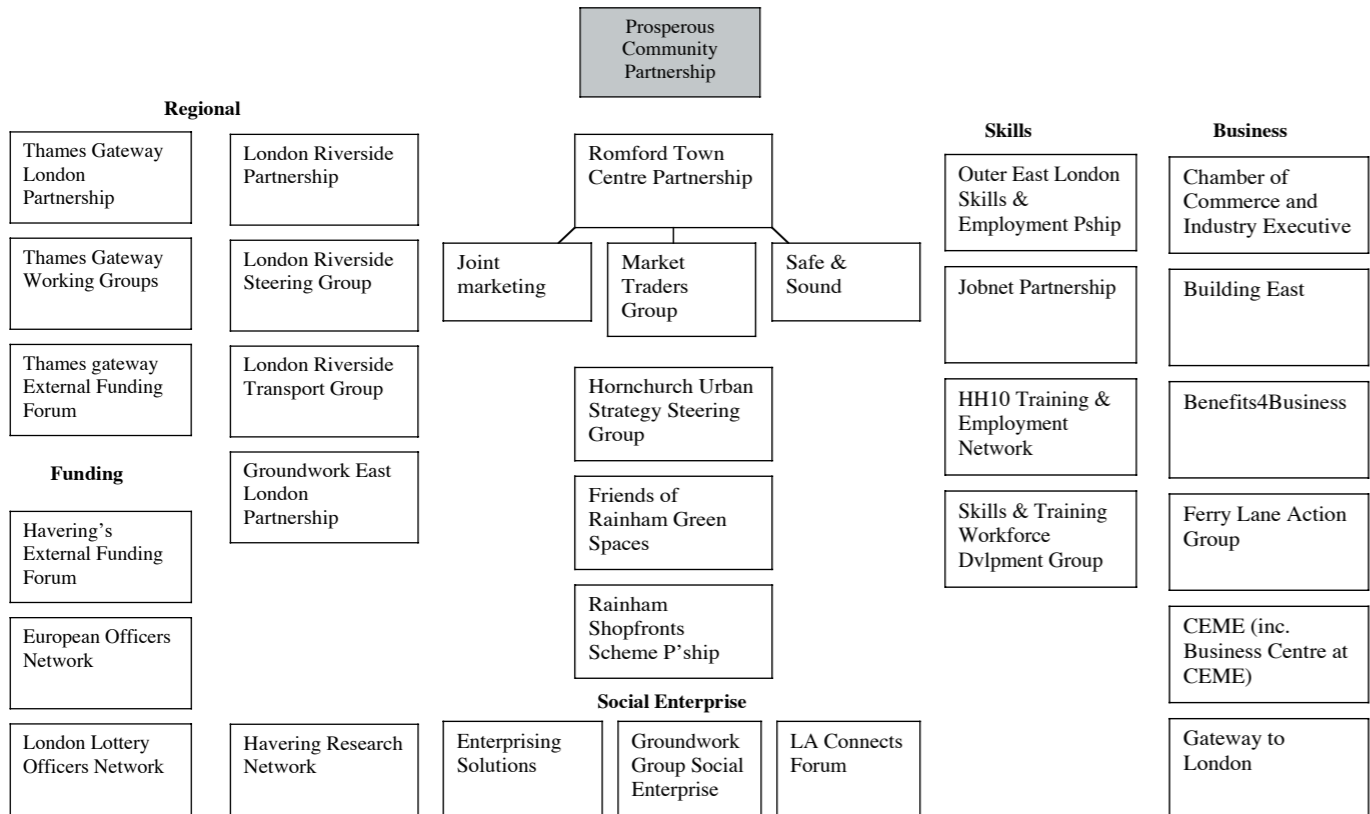
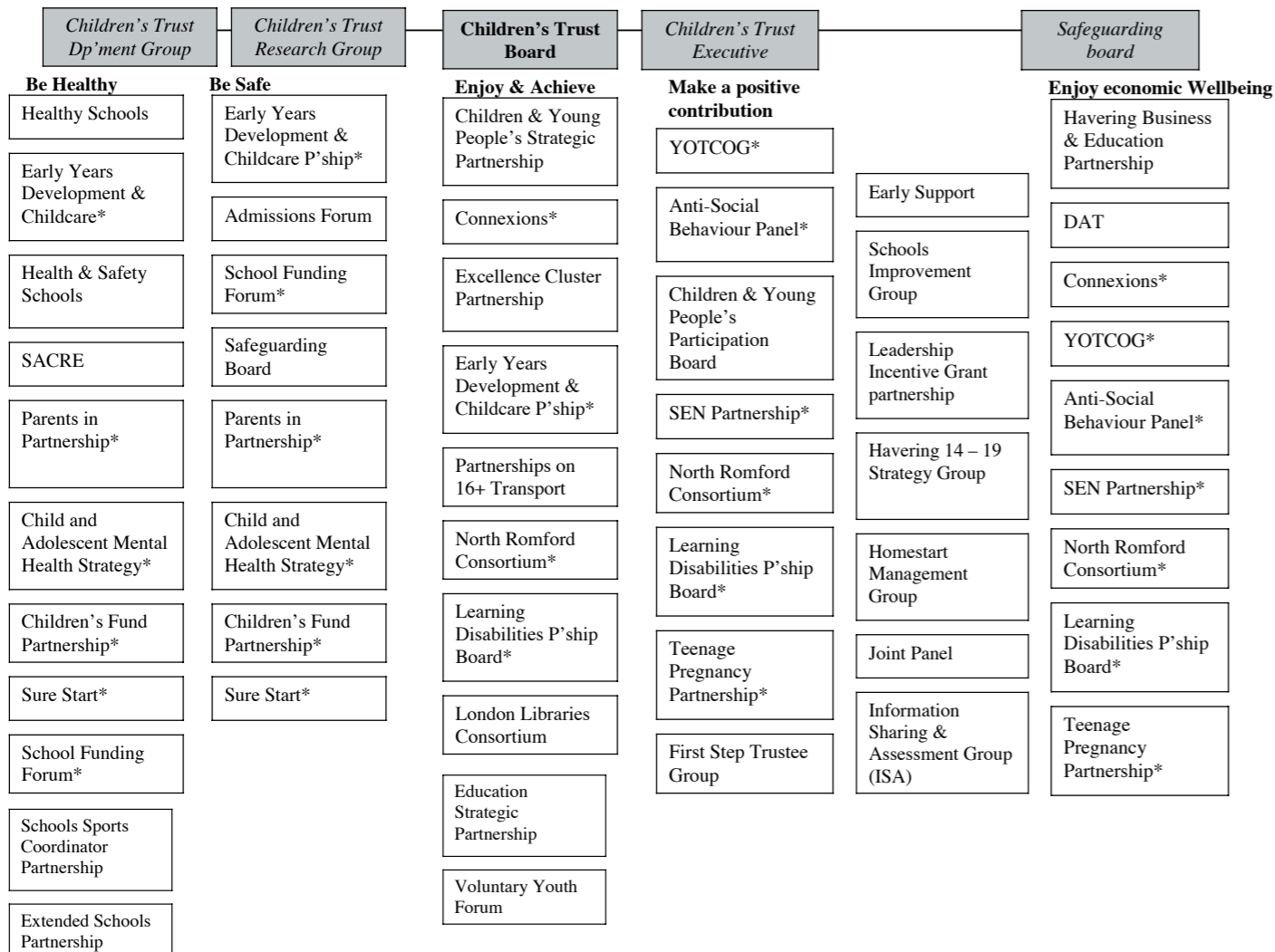


A more prosperous community



Improved lifelong Learning



BRIEFING PAPER: HSP Partnership Mapping

The partnership mapping exercise is being carried out to help the HSP review the way it works to ensure that it can effectively deliver the Local Area Agreement. It has been compiled through a combination of desk-based research and discussions with council officers and external partners.

The aim of the exercise is to place existing partnerships under the overarching umbrella of the Havering Strategic Partnership in order to:

- show which of the Community Strategy priorities the partnerships are helping to achieve;
- show governance arrangements and interdependencies between partnerships;
- identify any gaps in partnership working or areas where there may be duplication of work;
- consider how the effectiveness of the partnerships can be evaluated.

The list will also form a web-based partnership directory on the HSP website www.hspnetwork.org.uk providing the HSP, our partners and the public with a list of partnership activity along with contact details and links to the various partnerships.

The following pages show the map of partnerships under the themes of the community strategy:

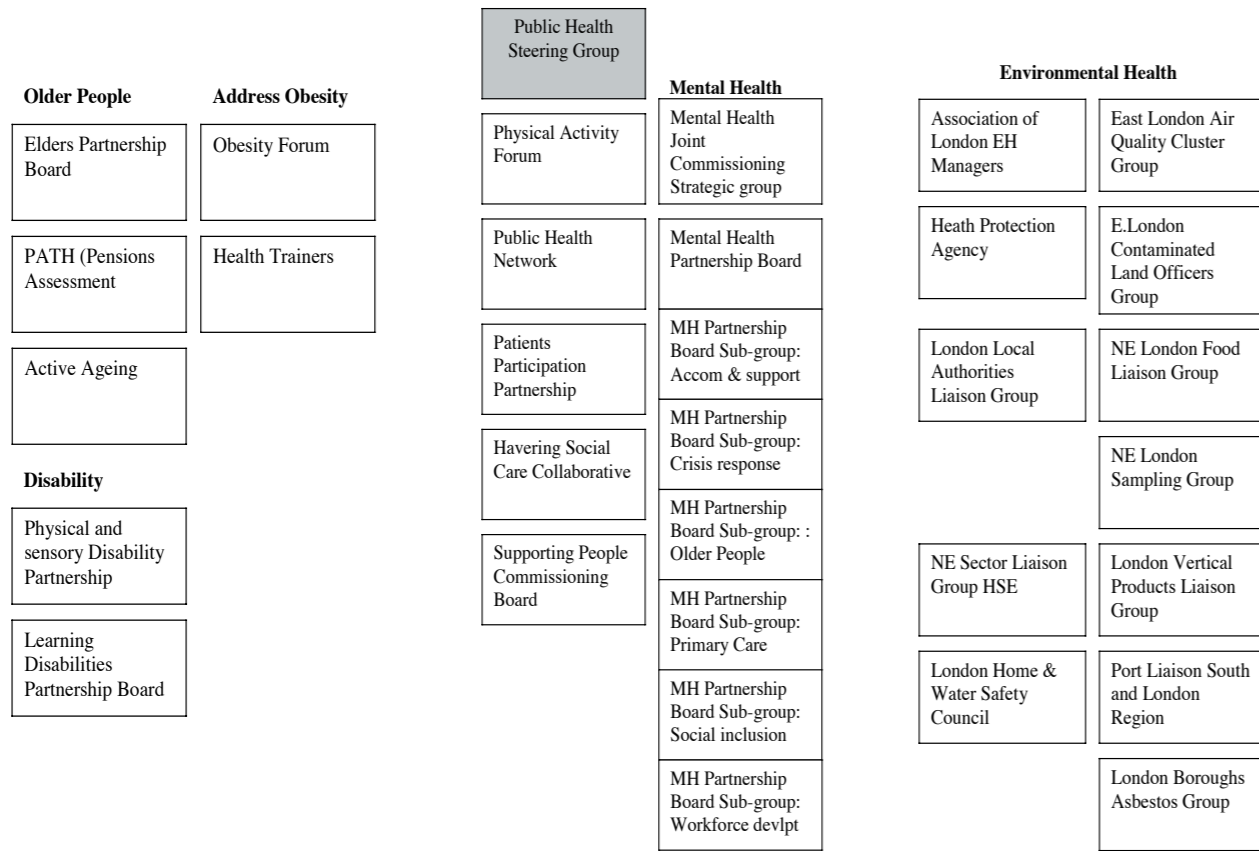


Further work is to be carried out to examine the governance arrangements and interdependencies between partnerships. In order to achieve this an evaluation package is being put together to help partners and champions review the partnerships and identify issues surrounding decision-making, reporting lines and added value from the partnership. These issues have strong links with those raised by the Audit Commission in its recent paper 'Governing Partnerships'.

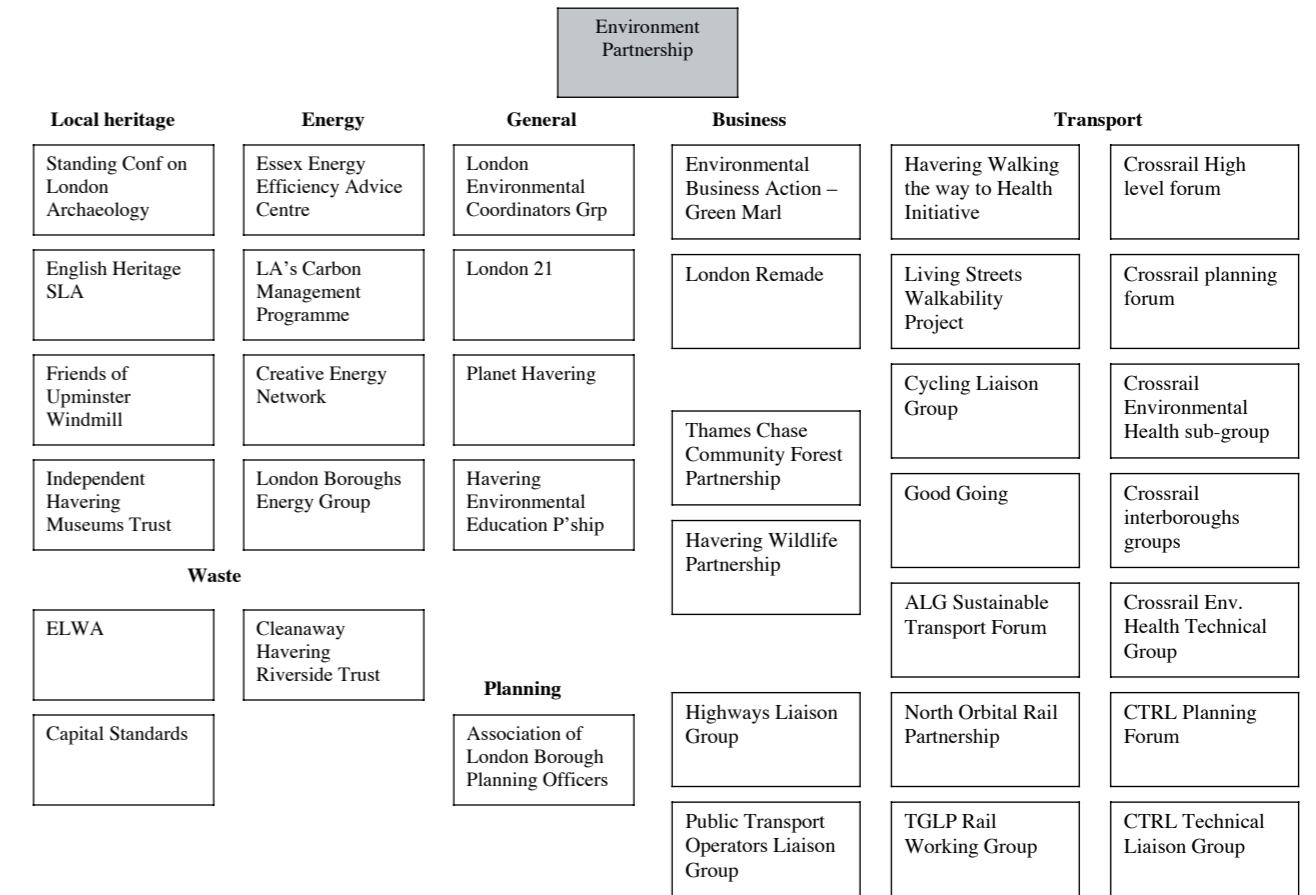
REPORT AUTHOR: Maddelyn Sutton
Strategy & Communications
01708 432475
maddelyn.sutton@haverling.gov.uk

DATE: January 2006

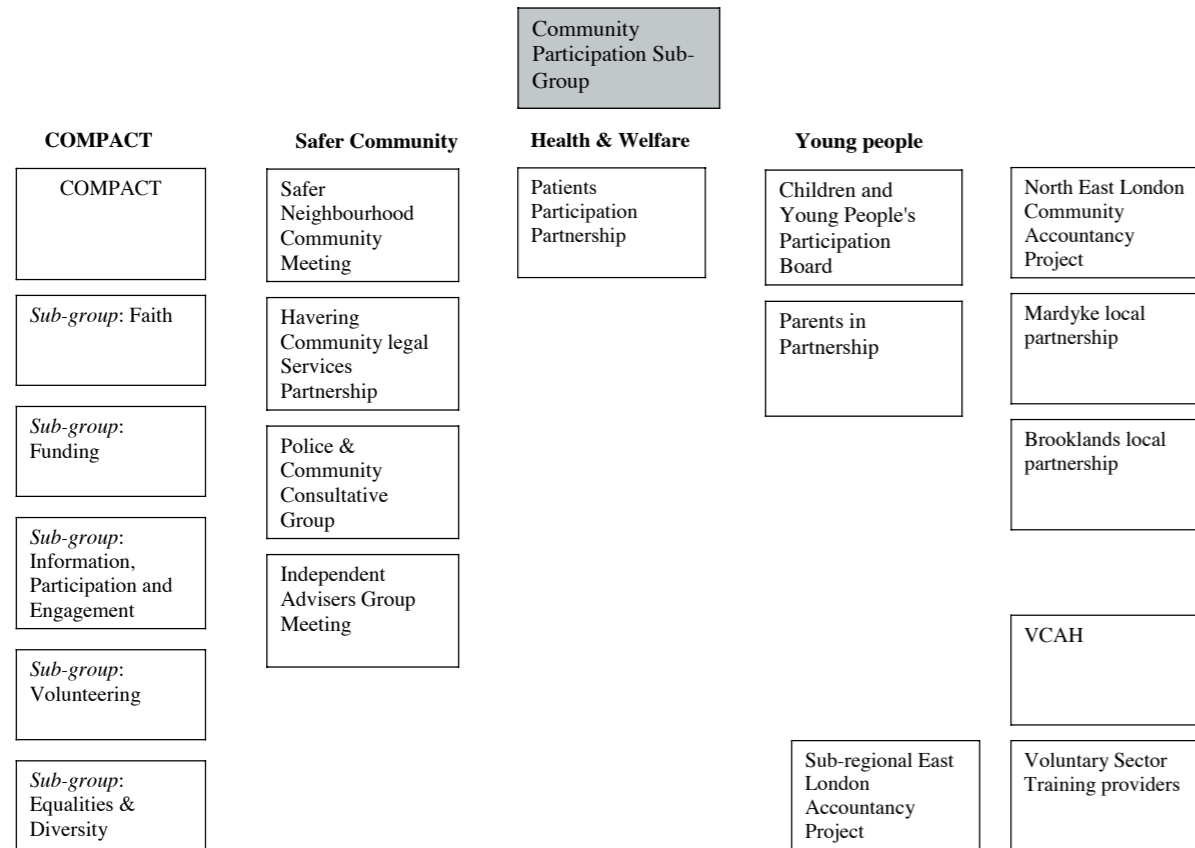
Better Health & Welfare



Improve & Protect the Environment



Increased Community Participation



A Safer Community

